

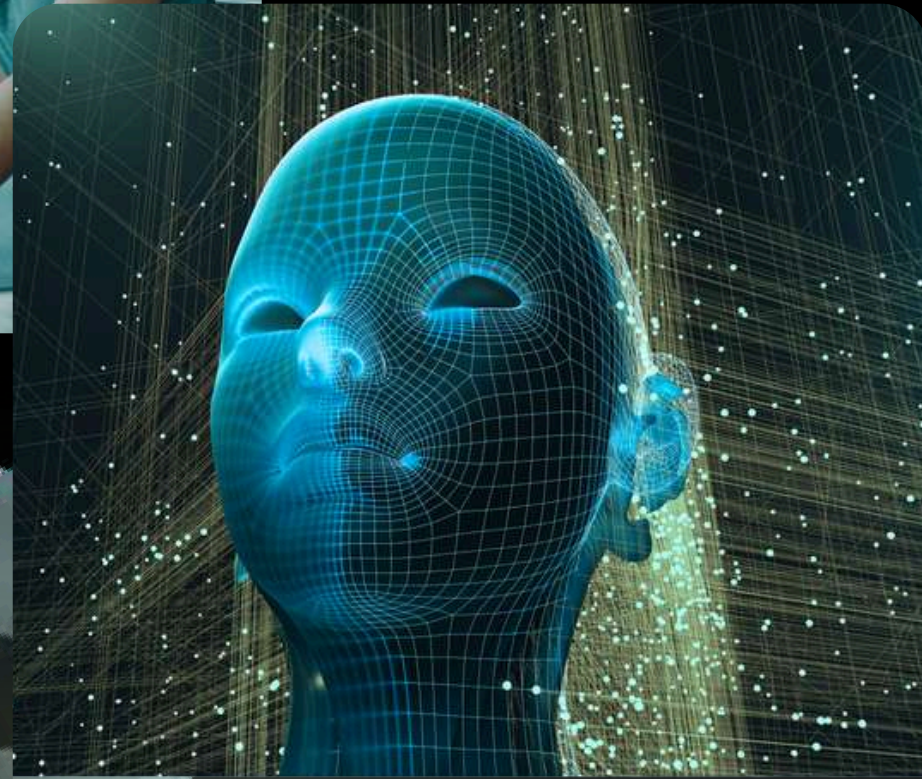
The logo for 'aiyuh' is written in a white, elegant, serif font. The letters 'a' and 'i' are lowercase, while 'y' and 'u' are lowercase, and 'h' is lowercase. The logo is centered in the upper half of the image. The background features a dark teal color with faint, circular patterns of zodiac signs and a DNA double helix. In the top-left and bottom-right corners, there are close-up, high-angle shots of a highly reflective, metallic surface, possibly a piece of jewelry or a futuristic device, which adds a sense of luxury and modernity to the overall aesthetic.

aiyuh

AI AGENT FOR HOLISTIC SELF-CARE

ANCIENT WISDOM.  
PERSONALIZED BY AI.  
ALWAYS ON.

↳ AWAKENING 2.0



REVOLUTIONIZING THE  
\$5.6 TRILLION WELLNESS  
ECONOMY THROUGH  
ANCIENT INTELLIGENCE &  
MODERN PRACTICES.

Combining Fitness Tracking, Cosmological  
Insights & Wellness Guidance.



FIRST AI-POWERED PLATFORM



MAINTAIN ROUTINES ACROSS FRAGMENTED APPS

ONE-SIZE FITS ALL RECOMMENDATION

DISCONNECTED SELF-CARE DATA

THE FRAGMENTED  
SELF-CARE CRISIS





## MEET MAYA: MODERN WELLNESS SEEKER

USES 6+ APPS

SPENDING \$200+ MONTHLY ON SUBSCRIPTIONS

OVERWHELMED, INCONSISTENT & DISCONNECTED

MISSING A HOLISTIC APPROACH TO  
HER WELLNESS JOURNEY



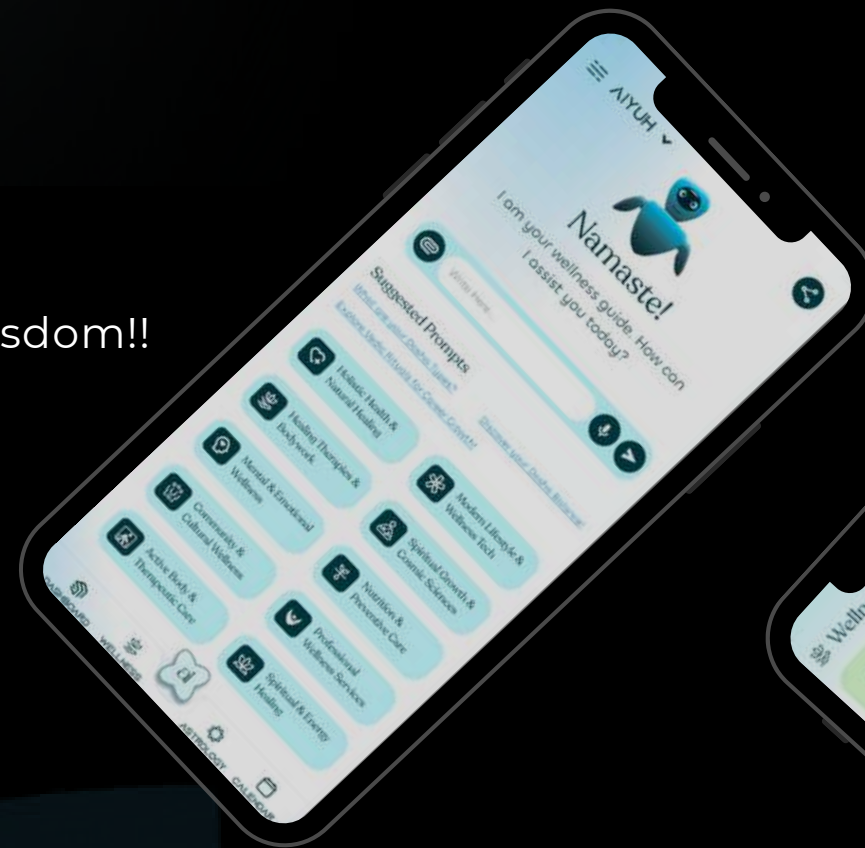


# AI-POWERED SELF-CARE

aiyuh

ONE APP. ONE AI. TOTAL SELF-CARE.

Your perfect wellness day, guided by AI and Ancient Wisdom!!



PRODUCT

AI AGENT  
& ASSISTANT

PERSONALIZED  
WELLNESS GUIDANCE



ANCIENT WISDOM  
INTEGRATION

SMART FITNESS  
TRACKING



# AIYUH ONE

YOUR MIND. BODY. SPIRIT.  
IN SYNC.



Biofeedback  
Monitoring



Personalized  
AI Coach



AI Wellness  
Nudges



RISE



EVOLVE

MOVE



# ANCIENT BLUEPRINT TO MODERN WELLNESS OPTIMISATION

WELLNESS  
BLUEPRINT

AI-POWERED  
INTEGRATION

UNIFIED  
GUIDANCE



\$ 5.6  
TRILLION

TOTAL AVAILABLE  
MARKET  
(TAM)

\$ 50  
BILLION

SERVICEABLE  
AVAILABLE MARKET  
(SAM)

\$ 500+  
MILLION

SERVICEABLE  
EARNABLE MARKET  
(SOM)

THREE BOOMING MARKETS MERGING INTO  
A SINGLE, UNMATCHED OPPORTUNITY



# BUSINESS MODEL

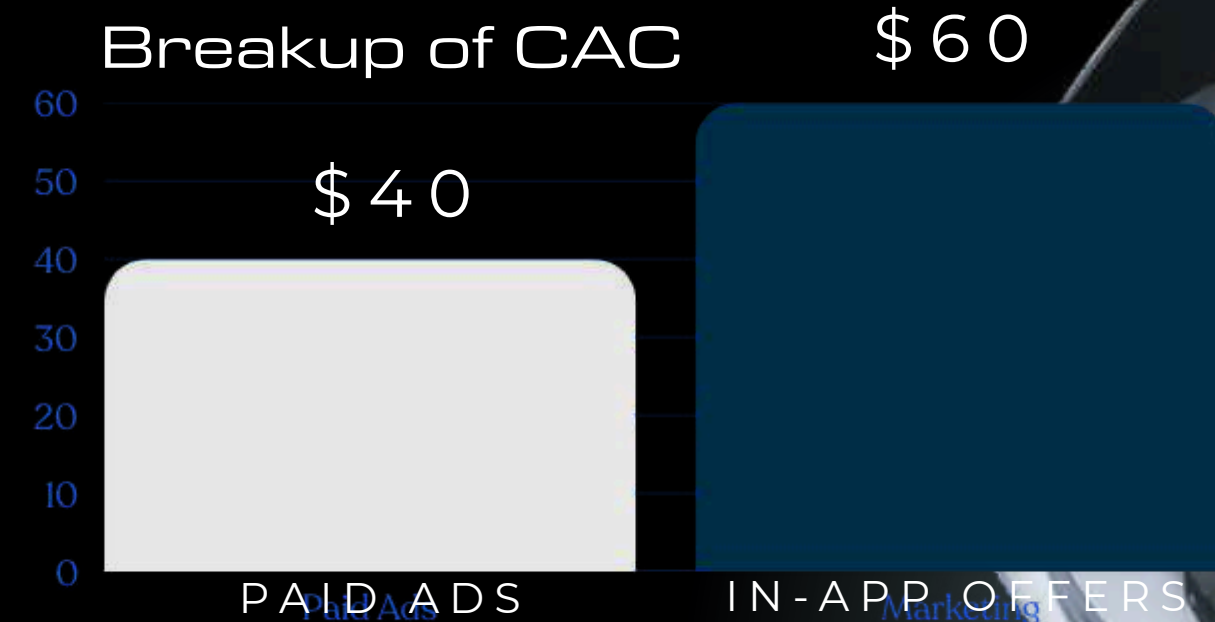
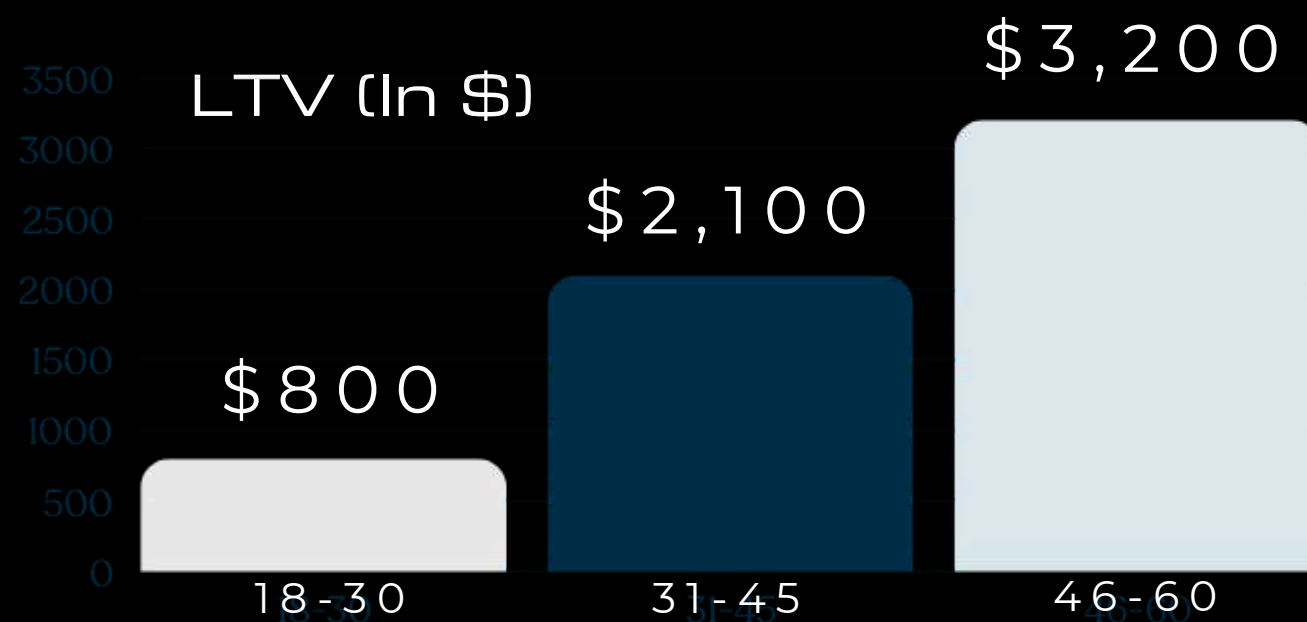
SUBSCRIPTION PLANS

IN-APP PURCHASES

B2B COLLABORATIONS



FIRST-MOVER  
ADVANTAGE IN SELF-  
CARE AI-ASSISTANT



# COMPETITOR ANALYSIS

HOLISTIC  
SELF-CARE

ANCIENT WISDOM  
INTEGRATION

AI-POWERED  
TASKS

INTERLINKED  
ROUTINES

FITNESS TRACKING  
(Fitbit, MyFitnessPal)



WELLNESS APPS  
(Headspace, Calm)



WEARABLE TECH  
(Smartwatches, Rings)



ANCIENT WISDOM  
(Shuddhi, AyuRythm)



AIYUH  
Complete Solution





# LONG-TERM IMPACT

10 MILLION LIVES TRANSFORMED BY 2030

BRIDGE ANCIENT WISDOM WITH MODERN  
SELF-CARE PRACTICES

PRESERVE & MODERNIZE TRADITIONAL SELF-  
CARE PRACTICES FOR FUTURE GENERATIONS

SELF-CARE GUIDANCE ACCESSIBLE  
REGARDLESS OF ECONOMIC STATUS OR  
GEOGRAPHIC LOCATION

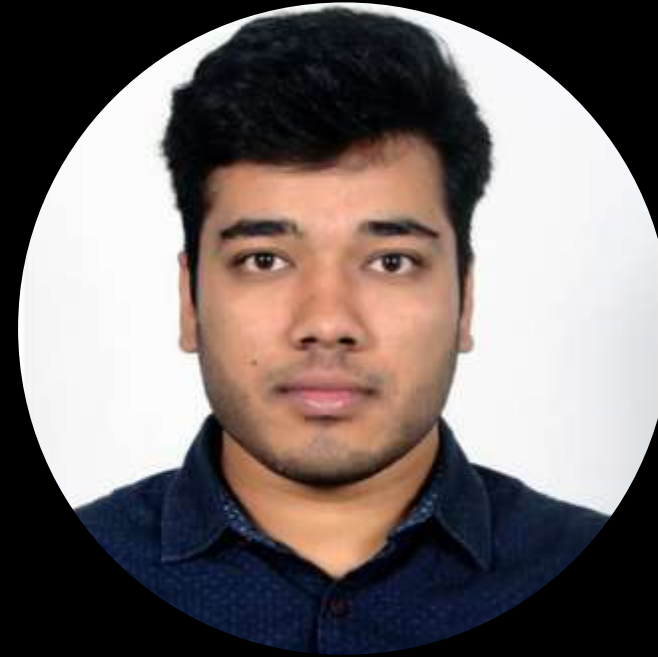


# TEAM



**Piyush Bhatnagar**

Chief Technology Officer  
(CTO)



**Devdhar Kanungo**

Chief Operations Officer  
(COO)



**Dyuti S. Ghadai**

Chief Finance Officer  
(CFO)

# CONTACT US

E-mail

[help@aiyuh.com](mailto:help@aiyuh.com)

Website

[www.aiyuh.com](http://www.aiyuh.com)

Phone

[+91-9005720282](tel:+91-9005720282)

Address

WorkFlo Icon Tower, Baner Road, Laxman  
Nagar, Baner, Pune, Maharashtra - 411045



THANK YOU